



# THE BAYSIDE



## THE BAYSIDE Model number:

4 beds • 2 baths • 2040 sq.ft. • 32' width • 68' depth

Our home building facilities invest in continuous product and process improvements. Plans, dimensions, features, materials, specifications and availability are subject to change without notice or obligation. Renderings and floor plans are representative likenesses of our homes and may differ from the actual homes. We invite you to tour a Home Center near you and inspect the highest value in quality housing available or call (318) 388-4777 to speak with a Home Consultant. Copyright 2017, CMH. All rights reserved.

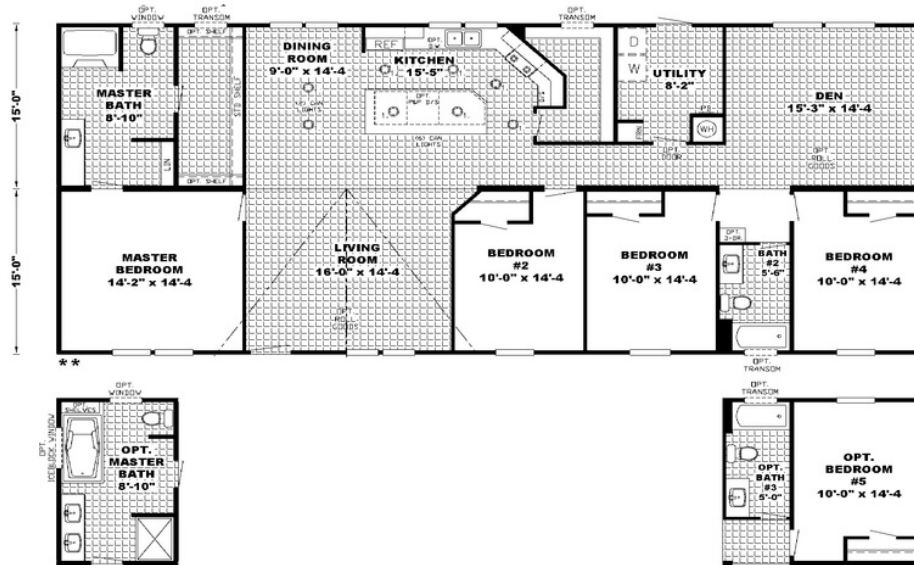
<https://www.claytonofmonroe.com>

## CLAYTON HOMES- MONROE

3505 HWY 165 BY-PASS  
SOUTH  
MONROE, LA 71202

Monday - Thursday: 9am to 6pm  
Friday: 9am to 6pm  
Saturday: 9am to 5pm  
Sunday: Closed

(318) 388-4777



## THE BAYSIDE Model number:

**4 beds • 2 baths • 2040 sq.ft. • 32' width • 68' depth**

Our home building facilities invest in continuous product and process improvements. Plans, dimensions, features, materials, specifications and availability are subject to change without notice or obligation. Renderings and floor plans are representative likenesses of our homes and may differ from the actual homes. We invite you to tour a Home Center near you and inspect the highest value in quality housing available or call (318) 388-4777 to speak with a Home Consultant. Copyright 2017, CMH. All rights reserved.

<https://www.claytonofmonroe.com>

**CLAYTON HOMES-  
MONROE**

**3505 HWY 165 BY-PASS  
SOUTH  
MONROE, LA 71202**

Monday - Thursday: 9am to 6pm  
 Friday: 9am to 6pm  
 Saturday: 9am to 5pm  
 Sunday: Closed

(318) 388-4777